

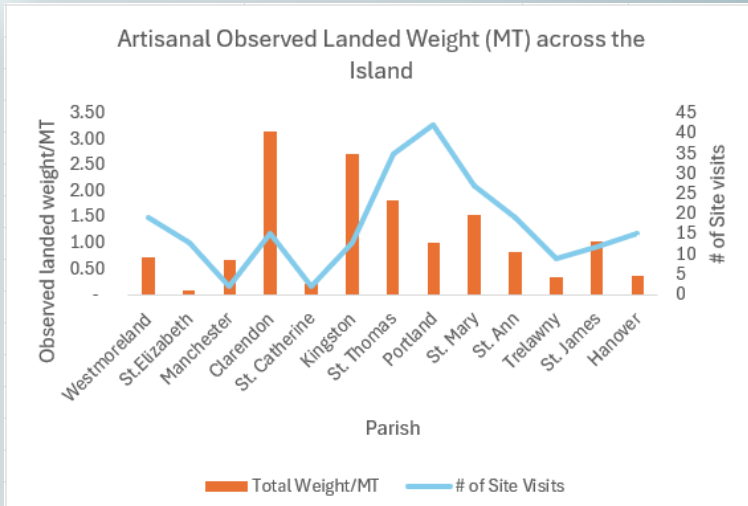
IN THIS ISSUE:

Page 1

OBSERVED WEIGHT (MT) PER PARISH | MARINE ARTISANAL PRODUCTION | OBSERVED WEIGHT (MT) PER SHELF | FIELD OBSERVATION | TOP 5 SPECIES PER SHELF | NON—FINFISH SPECIES

Page 2

LICENSING STATS | COMPLIANCE STATS | SGE SURVEY—UNITED OIL AND GAS

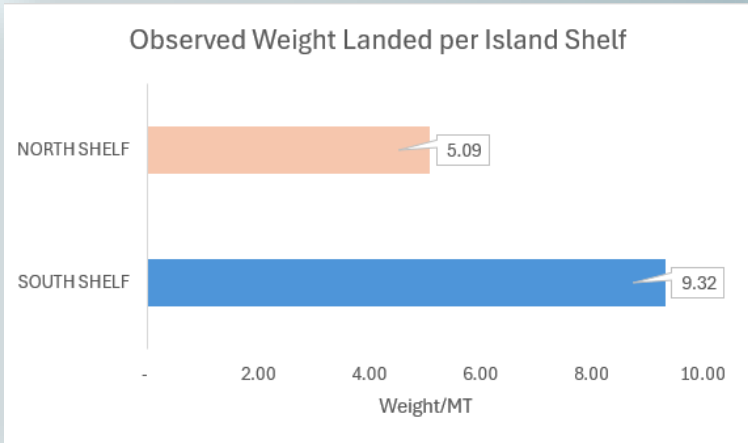


The Marine artisanal production for the month of December was estimated at 1,005.74 MT valued at US \$14,565,897.48 .

Field Observation – Finfish Species

During the month of December, a total of 223 site visits were conducted, with 124 being completed on the North Shelf and 99 completed on the South Shelf.

The total observed weight recorded was 14.41 metric tonnes (MT) across all parishes. 5.09 MT was landed on the North Shelf, while 9.32 MT was landed on the South Shelf. Clarendon emerged as the leading parish in terms of total observed landed weight, recording 3.15(MT), the highest volume among all parishes for the period.



Top 5 Fish Types per Shelf

North Shelf		South Shelf	
Fish Type	Weight/MT	Fish Type	Weight/MT
TUNAS	0.83	HERRINGS	1.50
PARROTFISHES	0.55	SNAPPER	0.81
SNAPPERS	0.39	JACKS	0.63
SCAD-BIGEYE	0.25	GRUNT	0.29
GREAT BARRACUDA	0.22	PARROT	0.20

Non-Fin Fish

Sea Cucumber	No landings
Caribbean Spiny Lobster	Eight (8) landings, 36.6 MT
Queen Conch	No landings, Close Season

IN THIS ISSUE:

Page 1

Page 2

OBSERVED WEIGHT (MT) PER PARISH | MARINE ARTISANAL PRODUCTION | OBSERVED WEIGHT (MT) PER SHELF | FIELD OBSERVATION | TOP 5 SPECIES PER SHELF | NON—FINFISH SPECIES

LICENSING STATS | COMPLIANCE STATS | SGE SURVEY—UNITED OIL AND GAS

LICENSING STATISTICS

Fisher Licence & IDs = 535

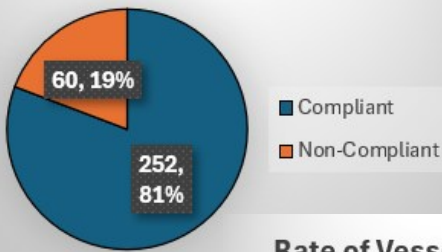
Categories	Renewals	New
Artisanal	416	72
Recreational	6	11
Industrial	6	0
Lobster Permit	0	13
Vendor	3	3
Aquaculture	1	4
Sea Moss	0	0
Riverine	0	0
Total	432	103

Vessels= 44

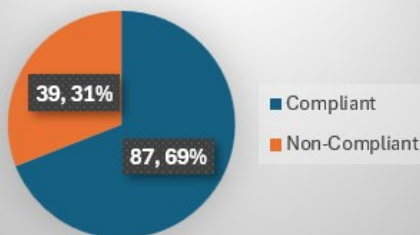
Categories	Renewals	New
Artisanal	31	6
Cay Boat Licence	0	0
Industrial	0	2
Recreational	1	4
Sport Charter	0	0
Total	32	12

COMPLIANCE STATISTICS

Rate of Fisher Compliance



Rate of Vessel Compliance



SGE Survey— United Oil and Gas

For three weeks in January 2026, a vessel operated by United Oil and Gas is expected to conduct a geological survey to validate the presence of hydrocarbon (oil) offshore Jamaica. The survey locations selected are deep water areas away from fishing grounds (Figure 1) and it is expected to be a low impact survey with minimal to no effect on marine life, marine environment or seabed integrity. United Oil and Gas is working closely with NFA’s Extension Services to keep fishers informed and a grievance framework has been established to address any potential any negative impacts that may be experienced by fishers. Fishers are encouraged to contact their Extension Officers if negative impact occurs as well as to keep clear of the vessel if it is spotted at sea. (Figure 2).

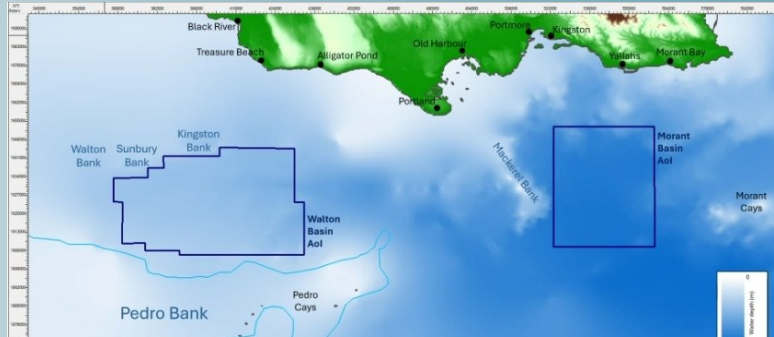


Figure 1 showing projected survey area

THE VESSEL - TDI BROOKS RV GYRE



Recognisable blue hull and white helm with blue trim

Figure 2 showing survey vessel

